



10 JANITORIAL, HYGIENE, CRIB & LEISURE PRODUCTS

CLEANING AGENTS

Hand Soaps & Cleaners	399
Barrier Creams	400
Surface Disinfectants & Cleaners.....	400-402
Automotive Cleaners & Polish.....	402
Toilet & Urinal Deodorisers	403

CLEANING EQUIPMENT

Toilet Brush Set	403
Rags, Cloths & Wipes	403-404
Scourers & Sponges.....	404
Brushes, Dust Pans & Boot Cleaners	404
Sweepers & Dust Mops	405
Brooms & Broom Heads	405-406
Squeegees, Mops & Handles	406-407
Buckets & Rubbish Bins	407-409
Janitors Trolley.....	409
Vacuum Cleaners.....	409
High Pressure Cleaners	410-411

CRIB & LEISURE

Coolers, Ice Boxes & Bricks	412
Drinking Water & Beach Umbrella.....	413
Insect Repellents & Ashtrays	413



CONTROL THE SPREAD OF GERMS & VIRUSES

- Wash hands frequently with soap and water for at least 20 seconds (including between your fingers, under your nails and the tops of your hands)
- Avoid touching your eyes, nose or mouth with unwashed hands
- Avoid contact with people who are sick
- Cover your nose and mouth when coughing and sneezing with a flexed elbow or tissue (to be disposed of immediately)
- If you have cold or flu like symptoms or fever, seek medical attention



HOW TO SELECT A HAND CLEANER

Hand Cleaners (Liquid or Bar)

Hand cleaners (soaps) are suitable when hands are visibly dirty, and is effective at removing loosely-adhered soiling. With the correct hand washing technique these cleaners are ideal for general hygiene. Antibacterial options have the added benefit of protection against infection and cross contamination.

Hand Cleaners With Grit

Grit is often added to hand cleaners to assist with the removal of stubborn oil, dirt and grime. Generally used in an industrial environment, the added grit assists in the scrubbing action that loosens tough adhered soiling.

Hand Wipes

Wipes are ideal for removing visible soiling from the hands quickly and without water. The wipe acts as a scrubbing agent assisting in the removal of any visible stubborn contaminates. Wipes are not an alternative to proper hand washing techniques.

Alcohol-Based Hand Sanitisers

Hand sanitisers are quick and easy, only requiring 10-15 seconds. They are recommended for routine hand cleaning when hands are already visibly clean, after contact with any contaminated objects (e.g. used tissues) or before coming into contact with any at-risk people (e.g. the sick, young or elderly). Alcohol-based hand sanitisers are 100 times more effective than ordinary hand cleaners at removing pathogens. If hands are visibly soiled, hand sanitisers are not an alternative to proper handwashing techniques.

What Is Solvent-Free?

Some industrial cleaners contain dangerous solvents derived from crude oil. These solvents are harsh and can be absorbed by the skin. Long term use can lead to harmful levels of toxins in the body. Hand cleaners labelled 'solvent-free' do not contain these solvents.

What Are Conditioners?

Handwashing can lead to dry damaged skin, or irritant contact dermatitis. Dermatitis can affect the integrity of the skin as a barrier to bacteria and pathogens. Added conditioners work to mitigate this effect.

SOLVOL

- Heavy duty hand cleaner
- Trusted for over 95 years to clean the dirty hands of hard working Australians
- Natural citrus oils and fine granule scrub removes ingrained dirt from hands and body
- No petroleum solvents
- pH balanced
- Leaves hands smelling fresh
- Naturally moisturising (liquid only)
- Suitable for removing inks, paints, silicone, glue and more
- Industrial size and easy to use liquid bottles



Item Code	Description	Size	Bishops Code
71128	Solvvol Scrub Soap Bar	100g	32819000
71050	Solvvol Citrus Liquid Hand Cleaner	500ml	32819006

HAND CLEANER GEL

- Remove grease, grime, dirt, oil, wet paint, tar, soot, carbon and much more
- Deodorise hands from the lingering smell of grease oil, paint or even fish and food odours
- Great for use in service bays, machines shops, MRO, commercial and industrial facilities
- Use with or without water
- Contains natural pumice to enhance the cleaning of stubborn dirt and grease



simple green

Item Code	Size
SG42020	20L
SG71001	Drum Pump to Suit

SPECIAL ORDER: PLEASE QUOTE ITEM CODE UPON ORDERING THIS PRODUCT

ELIMINATOR SOLVENT BASED HAND CLEANER

- Paint and resin removing hand cleaner
- Specialty formula removes acrylic and enamel paints, polyester and epoxy resins, urethanes, acrylic sealants and adhesives
- Waterless



Item Code	Size	Bishops Code
IHPE500	500ml	32818210
IHPE4	4L	32818220

CITRA SCRUB HAND CLEANER

- Industrial strength, natural, biodegradable, citrus based hand-cleaner
- Designed to remove dirt, dust, mud, oil, grease, solvents and coal dust
- Ideal for workers in mechanical and industrial workshops, mines, building sites, farms, fishing trawlers and oil rigs



Item Code	Size	Bishops Code
IHCS4	4L	32818160
IHCS20	20kg	32818200

PROTECTA® GRIT SOLVENT BASED HAND CLEANER

- Extra heavy duty industrial hand cleaner
- Speedily removes ingrained tar, carbon, varnish and most industrial soils
- Contains lanolin, aloe vera, vitamin E and jojoba oil to help prevent dry skin
- Includes grit to remove ingrained soils
- Waterless



Item Code	Size	Bishops Code
IHPG4	4L	32818110
IHPG20	20kg	32818115

PROTECTA® PINK GRIT SOLVENT BASED HAND CLEANER

- Extra heavy duty industrial hand cleaner
- Speedily removes ingrained tar, carbon, varnish and most industrial soils
- Contains lanolin, aloe vera, vitamin E and jojoba oil to help prevent dry skin
- Waterless
- Solvent based



Item Code	Size	Bishops Code
IHPP4	4L	32818095
IHPP20	20kg	32818100

WHAT IS BARRIER CREAM?

Barrier creams form a physical barrier between the skin and contaminants that may irritate the skin. Use barrier cream immediately after washing hands, paying particular attention to fingers and fingernails. Allow to dry before starting work. Re-apply after washing hands or as needed.



Barrier creams are used to protect hands against cleaning compounds, solvents, acids, oils and other caustic substances.

While somewhat effective at protecting against many skin irritants, barrier creams have not been proven to be as effective as certified PPE (Personal Protective Equipment) and should never be used in place of PPE.

For more hand protection, see the Safety section!



BARRIER CREAM & SURFACE DISINFECTANTS

JANITORIAL, HYGIENE, CRIB & LEISURE PRODUCTS

PROTECTA GUARD BARRIER CREAM

- Solvent resistant barrier cream
- Designed to protect skin against dry powders and dust, grease, oil and solvents
- Non-greasy, non-oily
- Contains added moisturisers
- Size: 500ml



Item Code	Bishops Code
ISPG500	32818080

PROTECTA PLUS BARRIER CREAM

- Water repellent barrier cream
- Designed to protect skin from water, moisture and water-borne irritants, acids, alkalis, electrolyte solutions and wet soils
- Non-greasy, non-oily
- Contains added moisturisers
- Size: 500ml



Item Code	Bishops Code
ISPP500	32818085

WHAT IS THE DIFFERENCE IN GRADES OF DISINFECTANTS?

A disinfectant is a substance which is recommended by its manufacturer for application to an inanimate object to kill micro-organisms. It is not recommended by the manufacturer to be suitable for internal use. But what is the difference between commercial and hospital grade disinfectants?

Commercial Disinfectant: Must be registered with the Australian Register of Therapeutic Goods and comply with parts of the Therapeutic Goods Order Number 54 (TGO 54). Commercial grade disinfectants need to effectively remove Escherichia Coli and Staphylococcus Aureus bacteria in a testing scenario.

Hospital Disinfectant: Must comply with Therapeutic Goods Order Number 54 (TGO 54) and must be registered with the Australian Register of Therapeutic Goods. Hospital grade disinfectant must effectively remove Pseudomonas Aeruginosa, Proteus Vulgaris, Escherichia Coli and Staphylococcus Aureus bacteria in a testing scenario. Disinfectants of this grade are registered for use in medical facilities.

Bleach: A strong and cost effective disinfectant, its active ingredient sodium hypochlorite is effective in killing bacteria, fungi and viruses. Bleach also irritates mucous membranes, the skin and the airways; decomposes under heat and light; and reacts easily with other chemicals. Therefore, use bleach with caution and always ensure there is adequate ventilation. Improper use of bleach, including ignoring the recommended dilutions, may reduce its effectiveness and can result in injury.

GET MORE AT BISHOPS ▶



DISPOSABLE GLOVES

Page 10

ANTIBACTERIAL WIPES

- MEDIQ antibacterial wipes are designed to provide instant cleansing and protection by killing 99.9% of germs
- Ideal for your travel bag, home, car or office for a peace of mind clean
- 75% alcohol
- Wipe size: 15 x 20cm
- 80 per pack



Item Code	Bishops Code
ABW80	32830126

ISOWIPE ALCOHOL WIPES

- Contains 70% isopropyl alcohol
- Highly effective and convenient disinfectant surface wipes kill bacteria and fungi
- Kills COVID-19 and SARS virus in 60 seconds
- Kills fungi (yeast and mould) in 10 minutes
- Kills bacteria (S. Aureus, E. Coli, Ps. Aeruginosa, Pr. Vulgaris)
- Ideal for use on stainless steel and other hard surfaces
- Ideal for high touch areas like door handles, bench tops, handrails, office phones, desks and keyboards
- Individual sheets in a handy dispensing canister
- Wipe size: 420(l) x 143(w)mm
- 75 wipes per pack
- Always read the label and follow the directions of use



Item Code	Bishops Code
CW75	55090150

GLEN 20 SURFACE SPRAY

- Kills influenza virus, mould and mildew
- Eliminates odours
- Hospital grade surface spray disinfectant



Size	Bishops Code
175g	32818128
300g	32818129

WHAT IS THE DIFFERENCE BETWEEN SURFACE CLEANERS?

Below are guidelines on how to select the correct surface cleaner for your job. Before use, always check the applications listed on the product label and complete a patch-test on a small area where damage won't be noticeable.

CAUTION: Many surface cleaning products are toxic.

Always follow the instructions on the label and wear suitable personal protective equipment such as enclosed shoes, coveralls, gloves and safety glasses. All of these products can be found in the Safety section of this catalogue.

General Purpose Cleaners are easy to use and highly versatile, making them suitable for everyday cleaning tasks. Often water-based, each formulation contains one to all of the following.

Surfactants: Allows cleaner to wet surfaces, emulsify soils and pick up dirt

Solvents: Dissolves soil, greases and oils

Chelators: Binds with metal ions and helps clear soap scum

Builders: Adjusts pH to increase cleaner's performance

General purpose cleaners are not suitable for all surfaces. Before use, check the applications listed on the product label.

Graffiti Removers are specifically designed to remove graffiti from particular surfaces (e.g. painted walls, concrete and posters/billboards). Before use, ensure you check the suitable applications on the product label. Graffiti removers are toxic, therefore always follow safety instructions listed on the product.

Kitchen & Bathroom specialised cleaners are designed to remove mineral deposits such as calcium and lime. Most varieties do not contain harsh abrasives, making them suitable for stainless steel and bench tops. If you have a septic system, check the product label to ensure that it is septic safe.

Toilet Cleaners are often harsh, and are not suitable for other surfaces. Chemicals in toilet cleaners can cause skin irritations and toxic vapours. Take care and only use in well ventilated areas with fit-for-purpose protective equipment. If you have a septic system, check the product label to ensure that it is septic safe.

Pipe & Drain Cleaners unclog drains by dissolving any fats, grease, dirt, organic wastes and hair causing the blockage. Most common pipe and drain cleaners are alkaline based and are heavier than water, allowing them to reach the blockage. Pipe and drain cleaners are highly corrosive and toxic, therefore always follow the safety precautions listed on the product label.

Floor & Wall Cleaners are generally mild and water-soluble. Unlike other cleaners this variety tend not to leave residue behind, removing the need to rinse. Many floor and wall cleaners come in dedicated varieties, choose one that is appropriate for your surface.

Glass Cleaners contain surfactants and solvents which lift the dirt and grime, leaving a shiny surface. To ensure a streak-free shine, the solution must be wiped up before the product evaporates. General glass cleaners are not suitable for automotive use.

Automotive Cleaners are gentle, primarily composed of surfactants lifting the superficial dirt from the vehicle surface without damaging the paint work itself. Variations often include other agents such as rinse aids and gloss enhancers.

SPRAY & WIPE

- Ready to use hard surface cleaner
- Ammonia free, contains fresh lemon fragrance
- Removes smears, water based inks, finger marks, cooking oils and greases
- Cleans most surfaces including walls, laminates, whitegoods, chrome and stainless steel
- Safe on paintwork, won't damage upholstery or rubber
- 750ml trigger spray



SEPTONE

Item Code	Bishops Code
HGSW750	32818130

SIMPLE GREEN RTU & REFILLS

- Ready-to-Use All Purpose Cleaner is ideal for use on any indoor or outdoor washable surface, in the office and at home, or take it outside to use on garage floors, tools, bikes and patio furniture
- Simple Green Glass Cleaner does not contain harmful ammonia or bleach
- Easily removes fingerprints, smudges and other grime, to reveal a crystal clear shine
- All Purpose Simple Green also comes as an economical concentrate in both Original and Lemon Fragrances
- Safer, biodegradable formulas

simple green



Item Code	Description	Size
SG02496	All Purpose RTU Original Fragrance	946ml
SG16071	All Purpose RTU Lemon Fragrance	946ml
SG16072	Glass Cleaner RTU	946ml
SG13005R	All Purpose Concentrate Original Fragrance	3.78L
SG14010A	All Purpose Concentrate Lemon Fragrance	3.78L

SPECIAL ORDER: PLEASE QUOTE ITEM CODE UPON ORDERING THIS PRODUCT

CRYSTAL CLEANER & DEGREASER

- Crystal Simple Green Industrial Cleaner and Degreaser is a powerful, industrial-strength concentrate suitable for critical cleaning applications
- NSF labelled A1, A2, A4, A8, B1 and C1 for use in commercial kitchens, food processing plants and other areas where food is prepared or handled
- Quick Break formulation eliminates grease and grime, animal fats, oils, lubricants, baked on carbons, starches and other organic soils without harsh scrubbing
- Higher foaming, readily biodegradable formula rinses residue free
- Not classified as hazardous according to Model Work Health & Safety Regulations and GHS Criteria

simple green



Item Code	Size
SG19024	710ml
SG19128	3.78L
SG19001	20L
SG19054	200L
SG19275	1,000L

SPECIAL ORDER: PLEASE QUOTE ITEM CODE UPON ORDERING THIS PRODUCT



INDUSTRIAL SURFACE CLEANERS, DEGREASERS & PROTECTANTS

JANITORIAL, HYGIENE, CRIB & LEISURE PRODUCTS

INDUSTRIAL CLEANER & DEGREASER



- A powerful, concentrated all-purpose cleaner and degreaser that provides a safer alternative to other cleaners, bleaches and solvents
- Recognised by the U.S. EPA's Safer Choice Program as safer for people and the environment
- Ideal for a wide range of industries including manufacturing, mining, automotive and engineering
- Quick Break formulation cuts through tough grease, oils, cutting fluids, built-up grime and residue
- Readily biodegradable (per OECD 301D)
- Not classified as hazardous according to Model Work Health & Safety Regulations and GHS Criteria



Item Code	Size	Bishops Code
SG13033	946ml	*SG13033
SG13005	3.78L	*SG13005
SG13004	20L	32814076
SG13034	200L	32814080
SG13275	1,000L	*SG13275

* - SPECIAL ORDER: PLEASE QUOTE ITEM CODE UPON ORDERING THIS PRODUCT

TW20 TRUCK WASH



- Concentrated vehicle detergent cleaner
- Neutral pH
- Quick break, biodegradable formula
- Easily removes road grime, oil, soot and more from vehicle exteriors
- Safe on all paint finishes



ATTW20

Item Code	Size	Bishops Code
ATTW5	5L	32812004
ATTW20	20L	32812006

TRUCK WASH



- Used to wash trucks, earth moving machinery, trams, buses, trains, cars, boats, etc.
- Can be used with automated wash, pressure washer, foaming gun, spray pack, brush or sponge
- Lower foaming so less water is required when rinsing
- Features Quick Break so is ideal in wash bays equipped with an oil/water separator
- 20L of concentrate will make 600L of ready-to-use product at a dilution of 1:30
- Not classified as hazardous according to Model Work Health & Safety Regulations and GHS criteria



Item Code	Size	Bishops Code
SG13480	20L Drum	32812008
SG13482	200L Drum	*SG13482
SG13487	1,000L IBC	*SG13487

* - SPECIAL ORDER: PLEASE QUOTE ITEM CODE UPON ORDERING THIS PRODUCT

WHAT ARE SURFACE PROTECTANTS??

A protectants purpose is to protect and preserve. The use of protectant will keep surfaces looking newer for longer.

Glass Protectant

Ideal for vehicle windscreens. It repels rain, sleet and snow on contact, improving driver's visibility. The invisible, non-stick protectant layer also makes for easy removal of bugs, salt, mud and frost.



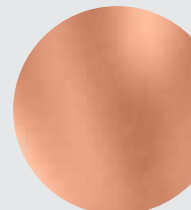
Furniture Protectant

Suitable to use on a variety of surfaces such as wood, enamel, leather, glass and plastic. A layer of furniture protectant will add shine, protect wood from watermarks and keep dust from settling.



Metal Protectant

Suitable for use on aluminium, copper, brass and fibreglass. It protects metals against stains, rust and weathering. A layer of protectant will also polish metal for a shiny appearance.



Automotive Protectant

This can be used both interior and exterior to protect vehicles from UV rays and provide a shiny appearance. The use of protectant will prolong paint or material life and help mask minor scratches and swirl marks.



ARMOUR COLOGNE



- Perfumed surface rejuvenator
- Protects and beautifies
- Ideal on leather, vinyl, rubber and plastics
- Leaves a pleasant lingering deodorant
- 750ml trigger spray



Item Code	Bishops Code
AVAC750	32812145

METAL POLISH



- Versatile polish suitable for polishing of most non-precious metals including stainless steel, chrome, nickel, brass, copper and aluminium
- Contains high quality wax for surface protection



Item Code	Size	Bishops Code
APMP250	250g	32812210

URINAL SCREEN PADS

- Freshens for up to 30 days
- Reduces splash back
- Gradually releases fragrance
- Reduces cleaning time
- Flexible, translucent vinyl
- Optimal flow through the drain while trapping debris
- Month tabs for replacement reminder
- Diameter: 170mm
- 2 per pack



Item Code	Scent	Colour	Bishops Code
USPBL	Ocean Mist	Blue	32816060
USPRED	Strawberry	Red	32816061

TOILET DEODORANT BLOCKS

- Biodegradable
- Long lasting and dependable
- Will not crumble or dissolve in water
- Economical alternative to other air freshener
- Air freshener and odour suppressant
- Suitable for toilets, bathrooms and urinals
- 4kg tub
- 25g blocks
- Approx. 160 blocks per tub



Item Code	Bishops Code
11725-16FRE	66550242

TOILET TIDY & BRUSH SET

- Tough bristles for a thorough clean
- Compact and lightweight design
- Corner design facing inward allows discreet storage of toilet brush



Item Code	Bishops Code
TBCAD	62574804

MIXED RAGS

- Suitable for cleaning
- 15kg bale



Bishops Code
32830020

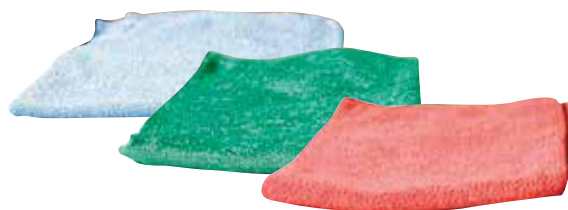
COLOUR CODED CLEANING SYSTEM

Protect your workplace from cross contamination by colour coding your cleaning equipment. Mops, buckets, cleaning cloths and more are all available from Bishops in a variety of colours to keep your workplace safe.



MICROFIBRE CLOTHS

- Microfibre properties trap and remove particles
- No chemicals or polishes required
- Ideal for wet or dry use on electronic goods and multiple surfaces



Colour	Bishops Code
Blue	32830040
Green	32830042
Red	32830044

CONTRACTOR WIPES ON A ROLL

- Extra thick, highly absorbent and quick drying
- Commercial strength
- Reusable
- Perforated sheets for easy tear off
- Colour coded series available to help avoid the risk of cross contamination between work areas
- Sheet size: 300 x 500mm
- 90 wipes per roll
- 45m roll
- Blue



Bishops Code
32830108



WIPES, SCOURERS & BRUSHES

JANITORIAL, HYGIENE, CRIB & LEISURE PRODUCTS

X30 BLUE WIPES

- 150 sheets per box



Item Code	Bishops Code
68301	32830125

SCOURER PAD

- Aggressive commercial grade scourer for removing tough grime
- Ideal for cleaning pots, cooking utensils and metal surfaces
- Size: 150 x 100mm
- Green
- 10 per pack



Bishops Code
32830032

SCOURER SPONGES

- Aggressive commercial grade scourer for removing tough grime
- Ideal for cleaning pots, cooking utensils, and metal surfaces
- Yellow/green
- 10 per pack



Bishops Code
32830038

STAINLESS STEEL SCOURER

- Manufactured from premium stainless steel
- Continuous filament for less linting
- 50g



Bishops Code
32830036

WOODEN BACK SCRUBBING BRUSH

- Industrial grade hard wearing bristles
- Two tier bristle levels ideal for scrubbing uneven surfaces
- Wooden back
- Dimensions: 185(l) x 55(w) x 45(h)mm



Item Code	Bishops Code
BSFB185	62512942

SINGLE WING SCRUB BRUSH

- Stiff, durable bristles remove tough grime
- General purpose hand brush ideal for scrubbing floors and other surfaces
- Wooden back



Item Code	Bishops Code
BSTT215	62512940

COCO BANNISTER BRUSH

- Wooden handle
- Coco-fibre bristles
- Hole in handle for easy hanging
- Dimensions: 270(l) x 40(w) x 55(h)mm



Bishops Code
62512920

PLASTIC DUSTPAN & BRUSH SET

- Side ridges effectively clean the brush and remove hair
- Flagged bristles trap dirt
- Available in colour coded range to help reduce the risk of cross contamination between work areas
- Blue



Bishops Code
62574800

3 SIDED BOOT CLEANER

- 3 sided brush provides optimum cleaning
- Frame is constructed from industrial strength steel
- Heavy duty bristles make removing dirt and mud from boots easier
- Black frame and brushes
- 215(w) x 370(d) x 505(h)mm
- Weight: 7.1kg



Bishops Code
62574990

ALL-PURPOSE LOBBY PAN SET

- Upright dust pan and broom set
- Medium stiff bristles trap dirt
- Deep pan for large cleaning jobs



Bishops Code
62574802

MODACRYLIC DUST MOP

- Sturdy metal frame swivels into hard-to-reach places
- Highly resilient and durable Modacrylic fibres capture dirt, lint and dust
- 900mm
- Orange



Description	Bishops Code
Dust Mop with Handle	62574830
Replacement Head	62574835

WET & DRY MANUAL FLOOR SWEEPER

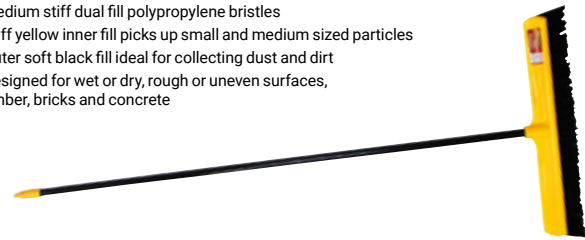
- Durable, corrosion-free, impact resistant engineering plastic
- Dual counter rotating brushes collect dust, heavier debris and provide edge cleaning from both sides of the unit
- Cleans larger areas quickly, easily and thoroughly
- Ideal for cleaning paths, driveways, storefronts, garages, poolside and movie theatres quickly and conveniently
- Wear-resistant, belt-free direct drive
- Operates without any fuel, oil or electricity
- Ergonomically designed, adjustable handle for fatigue-free operator comfort



Item Code	Bishops Code
MS80	62574992

TRADEMAN'S POLY BROOM

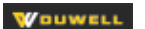
- Poly/medium tradesman with steel handle broom
- Complete with 1.47m x 25mm powdercoated steel handle
- Fluorescent yellow for improved visibility
- Ergonomic comfort grip on handle
- Medium stiff dual fill polypropylene bristles
- Stiff yellow inner fill picks up small and medium sized particles
- Outer soft black fill ideal for collecting dust and dirt
- Designed for wet or dry, rough or uneven surfaces, timber, bricks and concrete



Head Size	Bishops Code
450(l) x 65(w) x 130(h)mm	62574264
600(l) x 110(w) x 160(h)mm	62574266

INDOOR BROOM HEAD

- Indoor soft bristle broom
- Perfect for site shed
- Small head for maneuverability
- Suits 22mm screw-in handle
- Handle not included
- Dimensions: 290(l) x 60(w)mm



Description	Bishops Code
Standard Indoor Broom Head	62574422
Superior Indoor Broom Head	62574424

PLASTIC BACKED BROOM HEAD

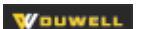
- Plastic backed, hard wearing
- Suits small and medium size particles
- Ideal for use on bitumen or paving
- Suits 25mm push-in handle
- Head size: 450(l) x 65(w) x 130(h)mm
- Handle not included
- Yellow



Item Code	Bishops Code
BROPBY450	62574250

POLY EXTRA STIFF BROOM HEAD

- Plastic backed, hard wearing
- Extra stiff bristles suit collection of large and heavy debris
- Ideal for use on bitumen or paving
- Suits 25mm push-in handle
- Head size: 600(l) x 65(w) x 140(h)mm
- Handle not included
- Yellow



Item Code	Bishops Code
	62574280



BROOM HEADS, SQUEEGEES & MOPS

JANITORIAL, HYGIENE, CRIB & LEISURE PRODUCTS

FRONT YARD CANE BROOM



- Extra stiff blend of natural bassine and cane bristles effectively collect large particles
- Resistant to moisture and heat
- Ideal for use on roads and heavy bitumen
- Handle not included
- 350mm



Bishops Code
62574420

HARD CENTRE INDUSTRIAL PLATFORM BROOMS



- Medium duty use
- Java, coco and synthetic blend bristles collect fine particles and minimise airborne dust
- Ideal for use on indoor factory floors
- Handle not included



Size	Bishops Code
450mm	62574020
600mm	62574040

TIMBER BACKED BROOM HEAD



- Natural fibre bassine bristles effectively collect small and large particles
- Ideal for use on pavers, cement and hot bitumen
- Handle not included
- 600mm



Bishops Code
62574320

SQUEEGEE HEAD



- Rubber squeegee on wooden frame
- Ideal for pushing and pulling liquids
- Suits 25mm push-in handle
- Handle not included
- Head length: 610mm

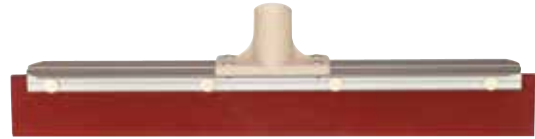


Bishops Code
62574512

ALUMINIUM FLOOR SQUEEGEE



- Highly durable grease resistant rubber on a rust resistant aluminium frame
- Ideal for pushing and pulling liquids on large concrete surfaces
- Ideal for kitchens
- Red rubber
- Handle not included
- 450mm



Bishops Code
62574510

FOUR POST SQUEEZE MOP



- Extra thick sponge for greater absorbency
- Wider sponge for greater floor coverage
- Extra long scour for removing stubborn marks
- Ergonomic locking nuts allow for easier fitting and removal of sponge refill



Description	Bishops Code
Four Post Squeeze Mop	62574820
Sponge Refill	62574821

COTTON MOP HEADS



- 100% cotton yarn
- Industrial strength multi-use mops
- Ideal for commercial cleaning
- Suits 22mm screw-in handle
- Handle not included



Head Weight	Bishops Code
350g	62574810
450g	62574812

POLY/COTTON MOP HEAD



- Polyester and cotton blend yarn ideal for applying sealers and polish
- Suitable for use on rough surfaces due to high lint resistance and durability
- Head weight: 450g
- Handle not included
- Blue mount



Bishops Code
62574819

CONTRACTOR COTTON MOP HEAD

- 100% cotton yarn
- Industrial strength multi-use mop
- To suit 22mm screw-in handle
- Handle not included
- Head weight: 500g



	Bishops Code
	62574815

DURACLEAN MOP HEAD

- Exclusive synthetic blend yarn for ultimate absorbency and cleaning performance
- Unsurpassed durability makes it ideal for all heavy duty commercial cleaning jobs
- Head weight: 400g
- Blue



	Bishops Code
	62574818

COLOUR CODED MOP HEADS

- Synthetic yarn fibres
- Industrial strength multi-use mops
- Ideal for commercial cleaning
- Suits 22mm screw-in handle
- Handle not included
- Head weight: 400g



Description	Bishops Code
General – Blue	62574805
Kitchen – Green	62574806
Bathroom – Red	62574807
Infectious – Yellow	62574808

WOODEN HANDLES

- Composite bamboo and timber handle for superior strength, flexibility and durability
- Using advanced technologies and materials sourced from renewable plantations
- High quality lacquer finish for added protection
- Features natural protection against constant water exposure, weathering, splintering, and damage caused by insects and other environmental factors resulting in increased life expectancy
- Ideal for heavy duty commercial use and worksites



Size	Bishops Code
1.35m x 22mm	62574901
1.50m x 25mm	62574902
1.80m x 25mm	62574903

METAL BROOM HANDLE

- Industrial multi-use handle
- Heavy duty lightweight steel
- Metal thread adaptor
- Suits head with 22mm threaded socket
- 22(dia)mm x 1.5(l)m



Item Code	Bishops Code
BROH15	62574920

ALUMINIUM CONTRACTOR HANDLE

- Ideal for commercial use
- Available in colour coded range to avoid cross contamination between different work areas
- 1.5(l)m x 25(w)mm
- Blue



	Bishops Code
	62574922

CONTRACTOR WRINGER MOP BUCKET

- Heavy duty plastic body is lightweight and hygienic
- Non-slip foot pedal and castors provide greater manoeuvrability
- Capacity: 15L
- Yellow



Capacity	Bishops Code
15L	62576048

DURACLEAN WRINGER MOP BUCKETS

- Dual action roller wringer bucket
- Lightweight plastic construction
- Non-marking castors
- Non-slip foot pedal
- Capacity: 15L



Colour	Bishops Code
Blue	62576044
Red	62576045
Green	62576046
White	62576047
Yellow	62576050



BUCKETS & BINS

JANITORIAL, HYGIENE, CRIB & LEISURE PRODUCTS

9L PLASTIC BUCKET



- Everyday multi-purpose bucket
- Handy pouring spout for easy transfer of liquids
- Ergonomic handle with comfort grip
- Capacity: 9L
- Blue



Capacity	Bishops Code
9L	62576040

9L PLASTIC BUCKET

- Round plastic bucket with pourer
- Wire carry handle for extra strength
- Capacity: 9L
- Colour may vary



Capacity	Bishops Code
9L	62576030

RUBBER BUCKET WITH POURING LIP

- High grade moulded rubber
- Reinforced profile
- Galvanised steel carry handle
- Capacity: 15L



Capacity	Bishops Code
15L	62576056

GALVANISED STEEL BUCKET

- Galvanised steel
- Comes complete with handle
- Capacity: 10L



Item Code	Bishops Code
90560024	62576014

STAINLESS STEEL BUCKETS

- Metal handle
- Stainless steel



Capacity	Bishops Code
8L	62576011
12L	62576010
16L	62576013

ROUND LID RUBBISH BIN

- Suitable for use in the kitchen, bathroom, office and garage
- Capacity: 50L
- 400(l) x 400(w) x 730(h)mm



Capacity	Bishops Code
50L	86410055

UTILITY BIN WITH LID

- Durable plastic bin with domed lid
- Suitable for outdoor use
- Capacity: 60L
- 460(l) x 460(w) x 580(h)mm



Capacity	Bishops Code
60L	86410070

GET MORE AT BISHOPS ▶



CLEANERS & DEGREASERS

Page 448

WHEELIE BINS

- Robust high performance design
- Comes with lid and wheels in a variety of colours



Colour	Capacity	Bishops Code	Colour	Capacity	Bishops Code
Blue	120L	86410045	Black	240L	86410074
Yellow	120L	86410046	Red	240L	86410076
Blue	240L	86410073	Orange	240L	86410075
Green	240L	86410071	Brown	240L	86410077
Yellow	240L	86410072	Purple	240L	86410078

JANITORS TROLLEY

- Lightweight and sturdy design with provision for many accessories to be hung
- Compact size for easy manoeuvrability into elevators and tight passageways



Item Code	Bishops Code
	32830046

SE 33 WET & DRY VACUUM CLEANER

- For cleaning dry and wet areas near the home and for car cleaning
- Versatile use due to an extensive range of accessories
- Accessories include: Switchable floor nozzle for flexible changeover between wet and dry vacuuming, blow function by moving the suction tube onto the exhaust port, ergonomic two-part suction tube
- Ideal storage of accessories directly on the power tool, crevice nozzle, floor nozzle, 2m vacuum hose
- Max. power consumption: 1,400W
- Max. vacuum pressure: 210 mbar
- Suction volume: 3,600L/min
- Suction flow: 3,600L/min
- Sound pressure level: 73dB(A)
- Mains voltage: 220-240/1~/50 - 60 V/Hz
- Suction hose length: 2m
- Hose diameter: 37mm
- Weight: 5.4kg



Item Code	Bishops Code
SE01 012 4404	79030450

SE 62 WET & DRY VACUUM CLEANER



- Suitable for domestic and light commercial applications
- Hygienic, economical and eco-friendly washable filter cartridge
- Aluminium suction pipe
- All purpose floor tool
- Automatic filter cleaning
- Max. capacity: 1.3W
- Suction volume (air): 3.6L/min
- Weight: 6.9kg



Item Code	Bishops Code
4784 012 4405	79030452

SE 133 WET & DRY VACUUM CLEANER



- Full wet and dry vacuum cleaners with automatic switch-on function in dust class M
- Automatic filter cleaning without loss of suction power
- Automatic volume flow monitoring
- Infinitely variable speed control
- Adaptor plates for carrying tool boxes
- Anti-static accessories also for extraction on battery-powered electric power tools
- Max. power consumption: 1,400W
- Maximum vacuum pressure: 250mbar
- Suction volume: 4,500L/min
- Container volume: 42L
- Sound pressure level: 68dB(A)
- Mains voltage: 220-240/1~/50-60V/Hz
- Suction hose length: 5m
- Hose diameter: 32mm
- Weight: 16kg



Item Code	Bishops Code
4786 012 4434	79030455

SE 122 WET & DRY VACUUM CLEANER



- Suitable for professional applications
- Hygienic, economical and eco-friendly washable filter cartridge
- Aluminium suction pipe
- All purpose floor tool
- Automatic filter cleaning
- Lockable swivel wheels
- Stainless steel hand and suction tubes with quick-action coupling
- Max. capacity: 1.5W
- Suction volume (air): 3.7L/min
- Weight: 10kg



Item Code	Bishops Code
4774 012 4401	79030454



HIGH PRESSURE CLEANERS – ELECTRIC

RE 110 PLUS PRESSURE WASHER



- Convenient and portable high pressure cleaner
- Aluminium pump head
- Brushless induction motor
- Integrated wheel kit
- Cleaning agent spray set, rotary nozzle, adjustable fan jet nozzle with pressure regulation
- Anti-drill quick-release coupling on the trigger and tool
- Park position for switching off the sprayer during breaks
- Comes with 7m high pressure hose and transport handle
- Particularly long sprayer for convenient operation
- Aluminium telescopic handle
- Storage compartment on the side with integrated nozzle and power cable storage
- Working pressure: 110bar
- Max. pressure: 120bar
- Power cable length: 5m
- Max. water supply temperature: 40 °C
- Power performance: 1.7W
- Rated voltage: 240V
- Weight: 17.6kg



Item Code

4950 011 4536

Bishops Code

79010302

RE 130 PLUS PRESSURE CLEANER



- Powerful high-pressure cleaner with exceptional comfort
- Aluminium pump head
- Brushless induction motor
- Integrated wheel kit
- Cleaning agent spray set, rotary nozzle, adjustable fan jet nozzle with pressure regulation
- Anti-drill quick-release coupling on the trigger and tool
- Sturdy, durable 9m steel-reinforced high-pressure hose and hose reel
- Reinforced transport handle
- Particularly long sprayer for convenient operation
- Aluminium telescopic handle
- Storage compartment on the side with integrated nozzle and power cable storage
- Max. working pressure: 150bar
- Working pressure: 135bar
- Max. pressure: 150bar
- Power cable length: 5m
- Max. water supply temperature: 40 °C
- Power performance: 2.3W
- Rated voltage: 240V
- Weight: 21.2kg



Item Code

4950 011 4564

Bishops Code

79010306

RE 170 HIGH PRESSURE CLEANER



- Wear-resistant, ceramic-covered pistons ensure a heavy duty pump together with the brass pump head for a long service life
- Integrated high-pressure hose reel with guide and folding crank
- Aluminium telescopic handle
- Variable pressure fanjet nozzle
- 240V
- Power consumption: 2.4kW
- Max. working pressure: 120bar
- Max. water throughput: 7.8L/min
- Max. temperature: 60°C
- High pressure hose length: 12m
- Weight: 31kg



Item Code

RE01 011 4534

Bishops Code

79010308

BLACK BOX ELECTRIC COLD WATER PRESSURE CLEANER & TROLLEY

- Compact and portable high pressure cleaner
 - Suitable for light domestic, workshop and commercial applications
 - High level of performance and working life
 - Brass head triplex pump
 - Detergent injection
 - 240V, 2.6kW, 4 Pole
 - Flow rate: 8L/min,
 - Max. pressure: 2,175psi (140 bar)
 - Working pressure: 1,800psi (124 bar)
 - Working pressure (with Turbo Lance): 3,400psi
 - 390(l) x 240(w) x 230(h)mm (without trolley)
 - Weight: 30kg
- Includes:**
- 8m wire braided hose
 - Gun/lance assembly & Turbo Lance
 - Heavy duty trolley (not pictured)



Item Code

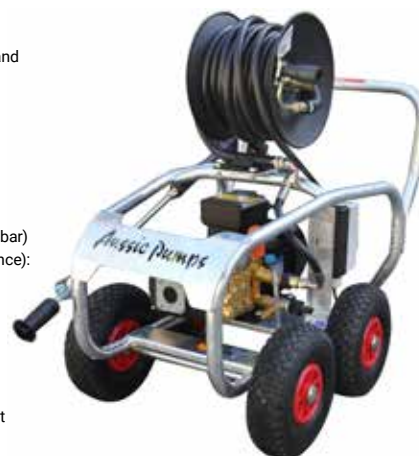
FKB8.15TR

Bishops Code

79010340

MONSOON 200 ELECTRIC COLD WATER PRESSURE CLEANER

- Designed for tough conditions and long continuous operation
 - Suitable for heavy industries, ship yards, car detailers and food plants
 - Heavy duty Tiplax pump
 - Circuit breaker with thermal trip and short circuit protection
 - Integrated hose mount
 - Steel wheels with flat-free tyres
 - Detergent injection
 - IP65 rated casing
 - 415V, 5.5kW, 4 Pole
 - Flow rate: 15L/min,
 - Working pressure: 3,000psi (200 bar)
 - Working pressure (with Turbo Lance): 4,785psi
 - 700(l) x 580(w) x 550(h)mm
 - Weight: 70kg
- Includes:**
- 10m high pressure hose
 - Gun/lance assembly
 - 2 x Nozzles - laser cut & detergent
 - Aussie safety protection kit



Item Code

ABMONSS200

Bishops Code

79010480

MONSOON 140 ELECTRIC COLD WATER PRESSURE CLEANER

- Heavy duty professional high pressure washer
 - Designed for tough conditions and long continuous operation
 - Suitable for heavy industries, ship yards, car detailers and food plants
 - Heavy duty Tiplax pump
 - Circuit breaker with thermal trip and short circuit protection
 - Robust stainless steel frame
 - Steel wheels with flat-free tyres
 - Detergent injection
 - IP65 rated casing
 - 240V, 2.2kW, 4 Pole
 - Flow rate: 9L/min,
 - Working pressure: 2,000psi (140 bar)
 - Working pressure (with Turbo Lance): 3,400psi
 - 680(l) x 580(w) x 550(h)mm
 - Weight: 52kg
- Includes:**
- 8m high pressure hose
 - Gun/lance assembly
 - Aussie safety protection kit



Item Code

ABMONSS140

Bishops Code

79010350

SUPER INDY ELECTRIC HOT WATER PRESSURE CLEANER

- Slow speed heavy duty high pressure steam cleaner
- Specially designed for primary producers and earthmoving contractors
- Brass head Triplex pump and mild steel heavy duty coil
- High pressure detergent injection
- Stainless steel cover, steel chassis and bumper
- 250mm wheels
- Low water and fuel sensors, and safety auto shut-off
- 415V, 5.5kW, 4 Pole, 3 phase
- Flow rate: 16L/min,
- Working pressure: 3,000psi (200 bar)
- Working pressure (with Turbo Lance): 4,785psi
- Max. temperature: 120°C
- 1,070(l) x 740(w) x 920(h)mm
- Weight: 190kg

Includes:

- 18L diesel tank
- 8m high pressure hose
- Pro gun & 700mm lance
- Laser cut nozzle



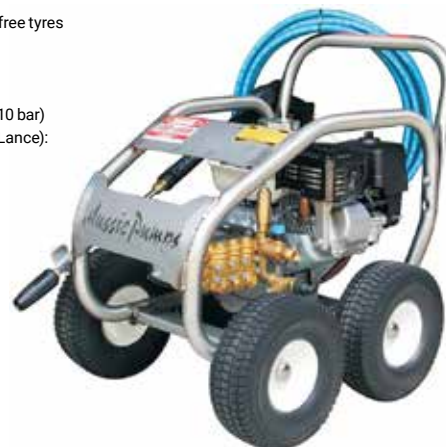
Item Code	Bishops Code
FS/INDSS2016TV3	79020640

SCUD AB30 DIESEL COLD WATER PRESSURE CLEANER

- Compact high pressure cleaner
- Suitable for trade and commercial applications
- Stainless steel frame
- 250mm steel wheels with flat-free tyres
- Detergent injection
- Honda GX200 engine, 6.5hp
- Flow rate: 10L/min,
- Working pressure: 3,000psi (210 bar)
- Working pressure (with Turbo Lance): 4,785psi
- Weight: 45kg

Includes:

- 8m high pressure hose
- Gun/lance assembly and Turbo Lance
- Aussie Safety Protection kit



Item Code	Bishops Code
ABSS30/GX200	79030400

RB 600 HIGH PRESSURE CLEANER



- For professional and commercial cleaning jobs
- Designed for handling heavy-duty projects with ease
- Pump components made of premium commercial-grade Triplex to reinforce its durability
- Easy start pump system allows you to start the washer without difficulty or back pressure from the pump
- Rated pressure: 3,200 psi
- Permissible pressure: 220bar
- Water flow rate: 11.3L/min
- Power: 5.2kW
- Displacement: 208cm³
- High pressure hose: 40ft
- Nozzle angles: 15/25/40/65°
- Weight: 53.5 kg
- Sound pressure level: 90.2 LpA dB(A)
- Sound power level: 103 LWA dB(A)



Item Code	Bishops Code
4791 012 4604	79010312

SCUD 400 DIESEL COLD WATER PRESSURE CLEANER

- Engine powered high pressure cleaner
- Suitable for heavy duty continuous cleaning including construction site, plant wash-down and graffiti removal
- Brass head Triplex pump
- Robust galvanised frame
- Steel wheels with tough terrain tyres
- Yanmar L100 ES engine, 10hp
- Electric start
- Flow rate: 15L/min,
- Working pressure: 4,000psi (275 bar)
- Working pressure (with Turbo Lance): 6,485psi
- 1,100(l) x 800(w) x 950(h)mm
- Weight: 110kg

Includes:

- 10m high pressure hose
- 4,000psi rated hand gun
- 2 x Nozzles - laser cut & detergent



Item Code	Bishops Code
ABSS400/L100E	79030420

RB 800 HIGH PRESSURE CLEANER



- For professional and commercial cleaning jobs
- Designed for handling heavy-duty projects with ease
- Pump components made of premium commercial-grade Triplex to reinforce its durability
- Easy start pump system allows you to start the washer without difficulty or back pressure from the pump
- Rated pressure: 4,200 psi
- Permissible pressure: 290bar
- Water flow rate: 15.1L/min
- Power: 10.5kW
- Displacement: 429cm³
- High pressure hose: 50ft
- Nozzle angles: 15/25/40/65°
- Weight: 76kg
- Sound pressure level: 93.3 LpA dB(A)
- Sound power level: 106.1 LWA dB(A)



Item Code	Bishops Code
4792 012 4604	79010314

PREDATOR A KDE DIESEL COLD WATER PRESSURE CLEANER

- Heavy duty high pressure cleaners for the toughest of cleaning jobs
- Brass head Triplex pump
- Air cooled diesel engine and gearbox drive
- Stainless steel frame with anti-vibration mounts
- 405mm steel wheels with pneumatic tyres
- Fitted with emergency stop and fire extinguisher
- Kohler KD625 engine, 25hp
- Flow rate: 16L/min
- Working pressure: 5,000psi (350 bar)
- Working pressure (with Turbo Lance): 8,500psi
- 1,250(l) x 800(w) x 1,130(h)mm
- Weight: 280kg

Includes:

- 10m high pressure non-marking hose
- Spray gun
- 800mm single lance
- Laser cut nozzle
- Aussie Safety Protection kit



Item Code	Bishops Code
ABSSPRED-A/KDE	79030440



COOLERS & HYDRATION

JANITORIAL, HYGIENE, CRIB & LEISURE PRODUCTS

WATER COOLER JUGS

- Polyurethane insulation to keep drinks cool
- Smaller sizes (2.5, 5 and 10L) come with a drinking cup lid
- A variety of sizes available to suit all occasions
- Suitable for recreational and workplace use



Description	Capacity	Size	Bishops Code
Without Tap	2.5L	200(l) x 200(w) x 240(h)mm	86410200
With Tap	5L	240(l) x 240(w) x 300(h)mm	86410210
With Tap	10L	280(l) x 280(w) x 360(h)mm	86410220
With Tap	15L	340(l) x 340(w) x 360(h)mm	86410225

COOLERS

- Polyurethane insulation to keep food and drinks cool
- A variety of sizes available to suit all occasions
- Suitable for recreational and workplace use



Capacity	Bishops Code
25L	62022225
55L	62022235

IGLOO® WATER COOLERS

- Cooler maintains ice for 3 days at 32°C
- High-visibility safety yellow colour
- "Drinking water" imprint meets OSHA labelling requirements for water used on jobsites
- UV inhibitors protect against sun damage
- Reinforced swing-up carry handle for easy transport
- Pressure-fit lid won't trap dirt or mould
- Recessed and angled drip-resistant spigot for easy dispensing
- Front push-button spigot is easy to access when wearing gloves on a worksite



Capacity	Bishops Code
20L	86410226
40L	86410228

ICE BOXES



- Heavy duty ice boxes
- Rotomoulding construction
- Polyurethane insulation
- Can be strapped down
- Suitable for outdoor use, camping and work sites



Item Code	Capacity	Bishops Code
C56L	56L	62022240
CZ90W	90L	62022242
CZ109LW	109L	62022244

ICE BRICKS

- No mess alternative to ice
- Non-toxic
- Reusable



Size	Bishops Code
150ml - 3 Pack	62022236
350ml	62022237
750ml	62022238

CARRY CONTAINER WITH POURER

- Lightweight multi-purpose carry can
- Can store water, industrial detergents and chemicals
- Convenient pourer prevents spills and splashing
- Can be easily stored in the car, boat and caravan
- Capacity: 20L
- 340(l) x 140(w) x 510(h)mm
- Blue



Capacity	Bishops Code
20L	62022220

GET MORE AT BISHOPS



SUNSCREEN

Page 33

BOTTLED DRINKING WATER

- 600ml
- Carton of 24, sold individually



Bishops Code
62022172

COOLAROO BEACH UMBRELLA

- Made with Coolaroo fabric
- Powder coated steel frame
- Tilt head
- Diameter: 1.85m



Bishops Code
55010290

BUSHMANS INSECT REPELLENT WITH DEET

- Gel formula
- Water, sweat and rub resistant
- Suitable for use on sensitive skin
- Pleasant neutral odour
- 80% DEET content
- 12 hours protection
- Size: 75g



Item Code 88891589 **Bishops Code** 32818070

AEROGARD INSECT REPELLENT

- Tropical strength
- Provides 6 hour protection against mosquitoes
- Also repels flies, sandflies, leeches, ticks and other annoying and biting insects



Size	Bishops Code
50ml Roll On	32818075
150g Aerosol	32818076
300g Aerosol	32818077

THERMACELL REPELLERS & REFILL KITS



- Effectively repels mosquitoes, black flies and other biting insects
- Creates a 21m square zone of protection for bug-free comfort
- Ideal for camping, fishing, 4WD and caravans
- Lantern and Portable Repeller bright 220 lumen light has a 10 hour run time
- Operates for up to 40 hours on it's lowest setting
- Backpacker Repeller offers up to 90 hours of run-time from a 110g gas canister and works dependably up to an altitude of around 2,100 metres
- Gas canisters must be purchased separately



THMRBP

THMR300B

THMRCLC



THM24



THR1



THR4

Item Code	Description	Includes
THMRBP	Backpacker Repeller	3 x 4-Hour Mats
THMR300B	Portable Insect Repeller	12hr Refill
THMRCLC	Scout Lantern Insect Repeller	12hr Refill

REFILLS		
THM24	24hr Refill	6 x 4-Hour Mats
THR1	12hr Refill	3 x 4-Hour Mats & 1 x Butane Cartridge
THR4	48hr Refill	12 x 4-Hour Mats & 4 x Butane Cartridges

SPECIAL ORDER: PLEASE QUOTE ITEM CODE UPON ORDERING THIS PRODUCT

CIGARETTE BUTT DISPOSAL

- Safe and attractive way of handling unsightly cigarette butts
- Polyethylene construction with flame retardant additive
- Will not rust, dent, crack or peel
- The large head dissipates heat
- The covered top keeps out rain and any other litter
- Moulded graphics in the head clearly identify the opening for cigarettes
- The large neck cavity minimises clogging
- the Cease-Fire design limits the flow of oxygen reducing the risk of fires
- The broad base contains removable 9L galvanised steel liner bucket for easy cleaning
- Made with moulded-in tie-down notches on both sides of the base for security
- Grey
- Height: 1,200mm
- Base: 420mm
- Disposal opening: 40mm



Item Code 1533 **Bishops Code** 86410094

